

TECHNICAL DATA SHEET (TDS) CUSTOM SUCTION COUCH ROLLS

SUCTION ROLL MODERNIZATION FROM CHINA

Suction rolls from china are designed to meet your unique application and specifications. This area is quite active in China but only a small number of companies are able to deliver the quality assurances suitable for most papermakers.

In fact, there are many suppliers selling rolls as low as \$5000 *USD. Unfortunately, often time, you'll get what you pay for when you aren't fully aware of the factory's background, expertise, running references and qualifications.



In China NMFC recommends three factories that are capable of supplying mid-level to top level suction rolls. Price points vary from \$35,000 USD up to \$60,000 USD depending on design, materials and overall specifications. To purchase outside of these price points, in china, would be nothing short of a mistake.

Although, Chinese rolls are available up to 7000mm+, we do not recommend projects BEYOND 4.5M widths.

Each roll is designed to the buyer's exact, technical criteria. Many of today's innovative features, common to this fabrication include:

- **Bearings:** Mounted Spherical Roller Bearings on tapered seats with hydraulic removal provisions. The standard, meeting L-10 (120,000 hours) lifespan.
- **Deckles:** Standard opposing screw type mechanical deckle adjustments.
- **Efficient Air Flow:** Designed to achieve the proper air flow efficiency from the shell through the suction box and out the suction elbow.
- **Internal Bearings:** Design with an inner ring rotation spherical roller bearing, mounted on a tapered seat journal for easy installation and removal.
- **Internal Suction Box Seals:** Industry standard seals between the suction box and the shell inside diameter with rubber graphite seal strips, silencers, end deckles with custom stainless-steel loading springs, and air tube loading assemblies.

TECHNICAL DATA SHEET (TDS) CUSTOM SUCTION COUCH ROLLS

- **Showers:** Custom rolls with a seal strip lubrication shower and cleaning shower.
- **Split Front Housing:** Split front housing enabling easy access to the bearings and vacuum connection assembly.
- **Suction Box Material:** Suction rolls are provided with stainless steel shells or bronze (as per the client's specifications). Carbon steel painted box is also available upon client requests.

真空伏辊主要技术参数表(供参考)

单位: mm

序号	抄纸宽度	两轴承座安装中心距	直径X面宽	幅宽调节范围	吸口型式	吸口宽度
1	1092	2035	Ø650 X1570	1310~910	单室	180
2	1260	2135	Ø650 X1670	1410~1110	单室	180
3	1575	2535	Ø650 X 2070	1810~1410	单室	180
4	1760	2735	Ø650 X 2270	2010~1610	单室	180
5	1880	2870	Ø650 X 2410	2150~1750	单室	180
6	1880	3045(悬挂室)	Ø700 X 2550	2280~1880	双室	135/85
7	1880	3105	Ø800 X 2600	2330~1930	双室	135/95
8	2362	3540	Ø650 X 2980	3710~2310	单室	180
9	2362	3505	Ø800 X 3000	2715~2515	双室	135/95
10	2400	3535	Ø650 X 3080	2810~2410	单室	180
11	2400	3505	Ø800 X 3000	2730~2430	双室	135/95
12	2640	3805	Ø800 X 3300	3515~2615	双室	135/95
13	2800	4000	Ø800 X 3495	3215~2815	双室	135/95
14	3150	4460	Ø1000 X 3860	3565~3165	双室	125/25
15	3150	4305	Ø800 X 3800	3515~3115	双室	135/95
16	3200	4365	Ø800 X 3860	3575~3175	双室	135/95
17	3300	4395	Ø800 X 3890	3605~3205	双室	135/95
18	3500	4795	Ø900 X 4240	3955~3545	双室	135/95
19	3600	4955	Ø1000 X 4400	4115~3715	双室	170/120
20	3800	5055	Ø800 X 4550	4265~3765	双室	135/95
21	4200	5405	Ø900 X 4900	4615~4115	双室	135/95
22	4400	5755	Ø900 X 5250	4965~4465	双室	135/95
23	4500	6025	Ø1000 X 5330	5050~4450	双室	150/110
24	4800	6310	Ø1000 X 5630	5350~4850	双室	150/110
25	5500	7000	Ø1140 X 6290	6000~5700	单室	500
26	5600	7255	Ø1250 X 6500	6200~5850	单室	475
27	5800	7320	Ø1160X 6650	6365~5965	双室	270/133

TECHNICAL DATA SHEET (TDS) CUSTOM SUCTION COUCH ROLLS

真空压榨辊主要技术参数表(供参考)

单位 : mm

序号	抄纸宽度	两轴承座安装中心距	直径X面宽	幅宽调节范围	吸口型式	吸口宽度	胶厚
1	1575	2400	Ø650 X 2020	1785 ~ 1565	单室	90	25
2	1600	2600	Ø700 X 2080	1810 ~ 1570	多室		25
3	1760	2760	Ø600 X 2260	1980 ~ 1780	单室	90	25
4	1760	2800	Ø700 X 2280	2010 ~ 1760	多室		25
5	1760	2880	Ø750 X 2290	2030 ~ 1730	单室	100	25
6	1880	2860	Ø600 X 2360	2100 ~ 1800	单室	80	25
7	1880	2900	Ø700 X 2380	2120 ~ 1820	多室		25
8	2362	3400	Ø750 X 2900	2630 ~ 2400	多室		25
9	2400	3620	Ø750 X 3000	2730 ~ 2430	多室		25
10	2640	3700	Ø750 X 3200	2910 ~ 2610	多室		25
11	2800	4000	Ø750 X 3400	3110 ~ 2810	多室		25
12	3150	4300	Ø750 X 3710	3430 ~ 3130	单室	100	25
13	3200	4300	Ø750 X 3760	3480 ~ 3180			25
14	3300	4350	Ø750 X 3800	3510 ~ 3310			25
15	3500	4600	Ø800 X 4100	3810 ~ 3510	单室		25
16	3600	4850	Ø800 X 4300	4010 ~ 3610			25
17	3800	5110	Ø850 X 4450	4150 ~ 3850	单室	100	25
18	4200	5460	Ø850 X 4800	4510 ~ 4210			25
19	4400	5810	Ø850 X 5150	4860 ~ 4460	单室	120	25
20	4500	5900	Ø1000 X 5230	4950 ~ 4550	单室	120	20
21	4800	6300	Ø1000 X 5630	5350 ~ 4950	单室	100	20
22	5800	7350	Ø1200 X 6550	6000 ~ 5600	单室	175	20



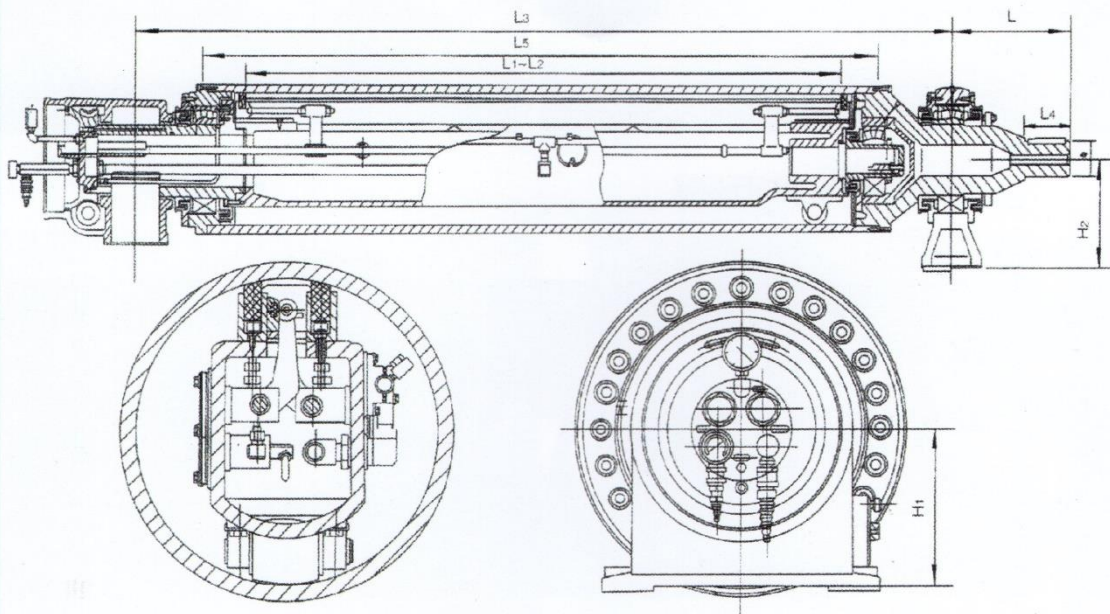
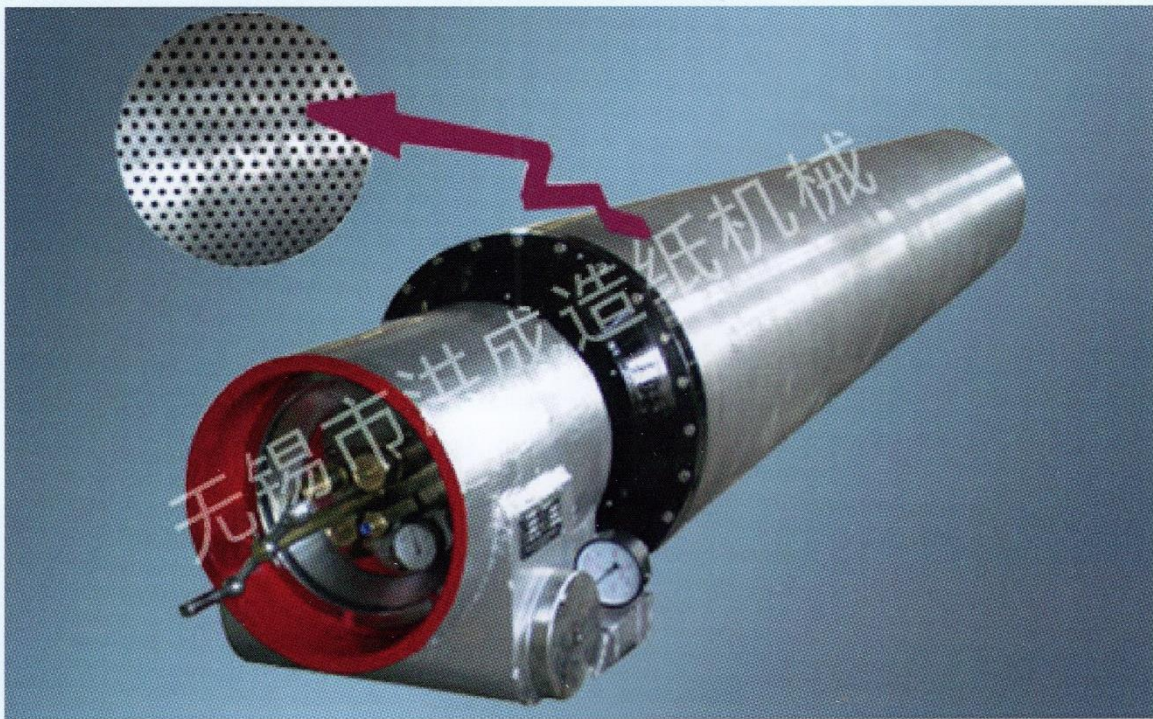
TECHNICAL DATA SHEET (TDS)

CUSTOM SUCTION COUCH ROLLS

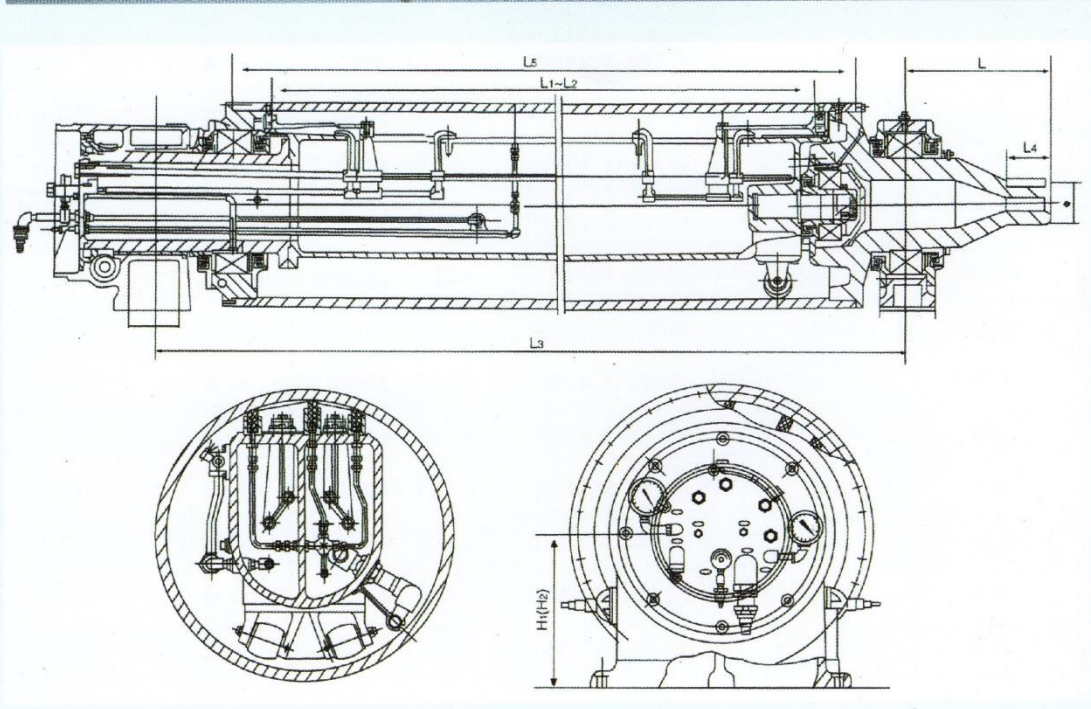
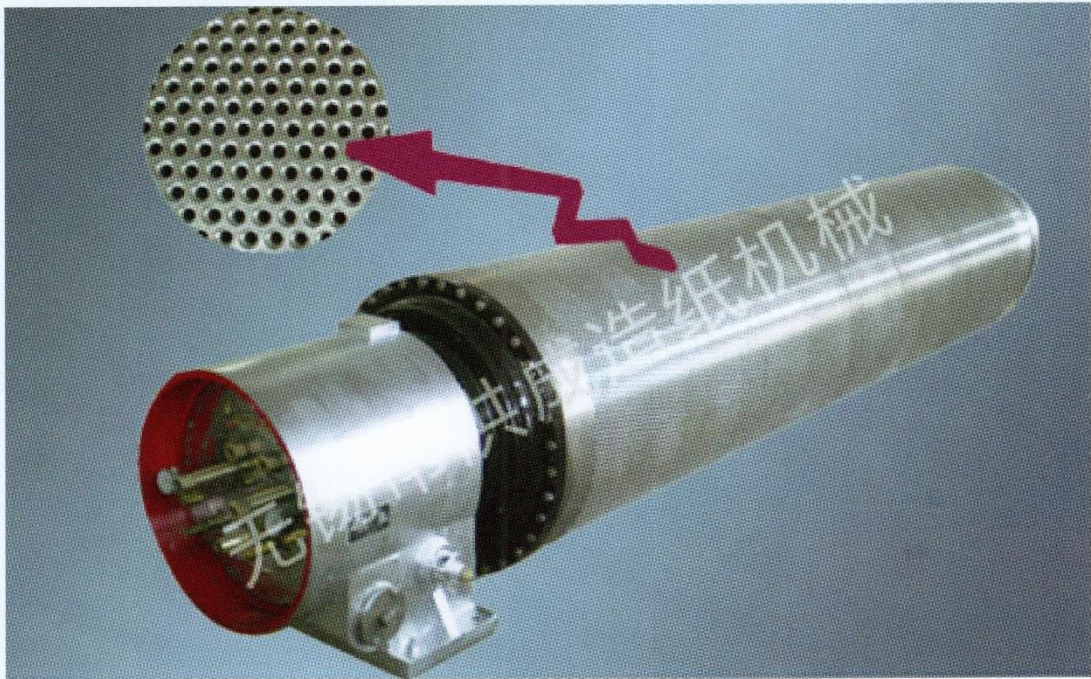
序号	抄纸宽度	两轴承座安装中心距	直径X面宽	幅宽调节范围	吸口型式	吸口宽度
1	1760	2760	Ø500 X 2260	1980~1780	单室	80
2	1880	2860	Ø500 X 2360	2080~1880	单室	80
3	1880	2890	Ø500 X 2490	2200~1760	单室	100
4	2362	3400	Ø550 X 2900	2620~2320	单室	150
5	2400	3500	Ø550 X 3000	2720~2420	单室	150
6	2640	3700	Ø550 X 3200	2920~2620	单室	150
7	2800	4000	Ø600 X 3400	3110~2810	单室	150
8	3150	4300	Ø650 X 3710	3430~3130	单室	150
9	3300	4350	Ø700 X 3800	3510~3310	单室	120
10	3300	4475	Ø720X 3775	3500~3200	单室	100
11	3500	4600	Ø650 X 4100	3810~3510		
12	3600	4850	Ø650 X 4300	4010~3610		
13	3800	5000	Ø700 X 4450	4150~3850		
14	4200	5350	Ø700 X 4800	4510~4210		
15	4400	5700	Ø700 X 5150	4860~4460		
16	4500	5900	Ø650 X 5230	4950~4450	单室	100
17	4800	6300	Ø650 X 5630	5350~4950	单室	110
18	5500	7010	Ø790 X 6150	5850~5500	双室	
19	5800	7350	Ø820 X 6500	6200~5950	单室	400



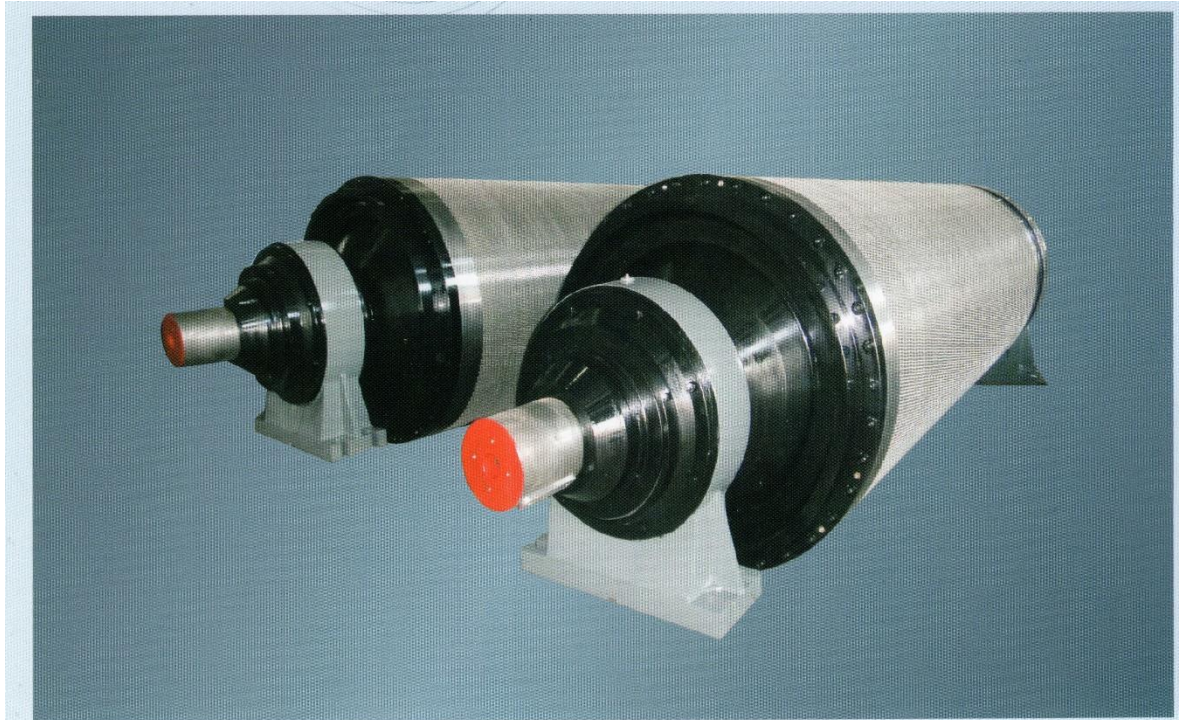
TECHNICAL DATA SHEET (TDS)
CUSTOM SUCTION COUCH ROLLS



TECHNICAL DATA SHEET (TDS)
CUSTOM SUCTION COUCH ROLLS



TECHNICAL DATA SHEET (TDS)
CUSTOM SUCTION COUCH ROLLS



真空网笼

应用于卫生纸机

车速

500-1000m/min

直径

φ1000-φ1500mm

辊面钻孔，开孔率约为70%

TECHNICAL DATA SHEET (TDS) CUSTOM SUCTION COUCH ROLLS



DESIGN STANDARDS

Suction rolls are designed to be efficient and heavy duty with a wide range of suction roll dimensions with the following options:

- **Air Flow:** CFM / sq. inch comparable to the international standard
- **Air Velocity:** Designed to keep air flow velocities in a normal operating range.
- **Bearing Life:** 120,000 L-10 Hours at design loads and speeds.
- **Deflection:** Designed to not exceed a maximum allowable deflection, ensuring proper functionality.
- **Drilling Patterns:** Standard "silent" type drill patterns to meet application and strength requirements with skilled technical oversight.
- **Shell Materials:** Three options for shell materials such as Bronze, CA-15 S/S, and Highest-Grade Alloy S/S.
- **Stress:** All critical components are engineered on every roll to ensure allowable stress values. Major components include Shell, Heads, Suction Box, and Bearing Housings and onsite engineering & commissioning.